

Figure S2 Panel of all images of confocal microscopy HTS of hits silenced in MeIJuSo

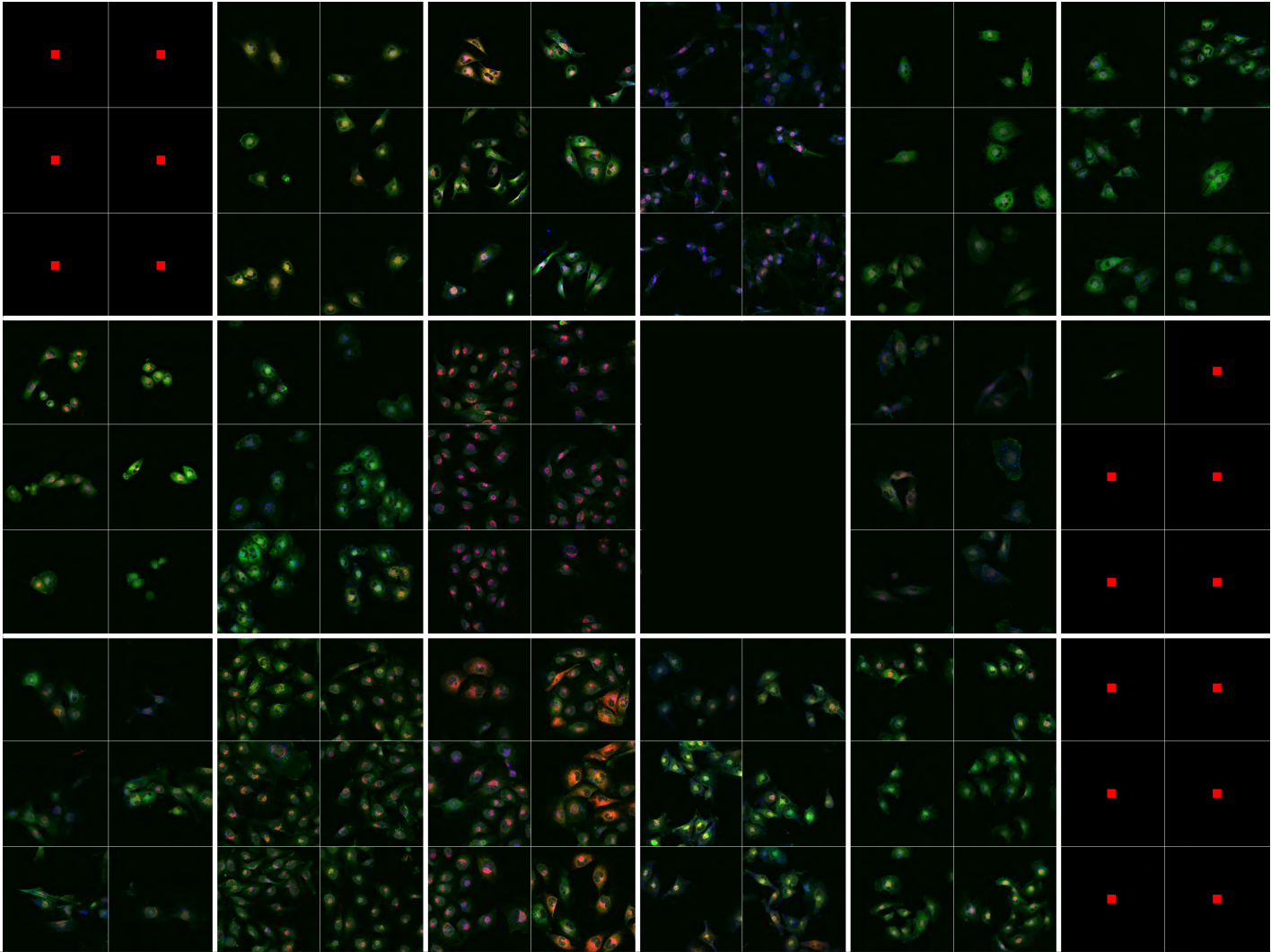
IBIDI #01	neg. control	MDS032	PEX26	GPP34R	RFWD3	RPP25
	pos. control	EZI	FLJ32844		PDCD1LG1	RRAGB
	TBC1D17	FLJ13639	FLJ14146	ZNF552	UNKL	CREB3L2
IBIDI #02	neg. control	FLJ10241	SARS2	FLJ20249	SCAND2	
	pos. control	MGC33584	C9ORF59		ZBED2	FLJ23476
	FLJ22318	DDX31	BCL11B	LOC63920	GOLPH3	PP3111
IBIDI #03	neg. control	ZNF462		ZNF304	FEM1C	MGC16824
	pos. control	SLC4A2	SLC6A9	SEC13L1	SFRS1	
	BACE1	ZNF324	NONO	MT1X	KIR2DS4	KRTHA1
IBIDI #04	neg. control	KAT3	C1ORF6	FLJ11280	FBXO28	RBAF600
	pos. control	EIF2S1	EIF2S3	GARP	GNA12	CDC42EP4
	PSMB2	ACRBP	ACTRT1	COX7C		
IBIDI #05	neg. control	TNRC15	DKFZP547E10	NOL6	LOC65243	MGC3036
	pos. control	PPIG	HTATIP	FKBP3	CHD4	HLA-DRA
		ACK1		NR1H2	PAX8	THRB
IBIDI #06	neg. control	OTUB2		EFHD2		PRKD2
	pos. control	IL27RA		CCL3L1	IL10RA	
	LOC124842		CRYAB	DAP3		MHC2TA
IBIDI #07	neg. control	FLJ35784		FLJ45983	LOC389643	ACTBL1
	pos. control	REC14	CDCA3	RILP	CCM2	RNF26
		U5-116KD	STOML1		KIAA0140	NUP93
IBIDI #08	neg. control	NOMO3	KCNJ4		LOC388720	FLJ45910
	pos. control	SMCR7		MGC16279		DGCR6L
	IL23A	CGI-48	VPS28	C15ORF15	TIMM44	
IBIDI #09	neg. control	QP-C	CPAMD8			USP54
	pos. control	KIAA0258	POM121	C19ORF32	TTC18	C21ORF96
	DDAH1	ZNF426	ZNF69	SMP3	NACA	SNAPC4

IBIDI #10	neg. control			RFT1	FUT10	SOC
	pos. control	FLJ11848	CORT	TOLLIP	TOLLIP	CORT
	DPYSL2	CAD	MAFA	WARP	FLJ10618	SLA2
IBIDI #11	neg. control	MDA5	PLEKHA4		C13ORF9	GPR91
	pos. control	DYRK1A	TRIP13	NPR2	CHEK1	ARAF1
	CSK	DAPK1	DGKQ	IKBKE	TNIK	MAP2K3
IBIDI #12	neg. control	HLA-DMB	THTPA	LOC403313	CHKA	DAPK3
	pos. control	ASP	CAMK1	CDC2L5	PLK3	CSF1R
	MAP3K11	MAP3K12	MAP3K14	MAP3K9	MAP4K1	MAPK1
IBIDI #13	neg. control	MINK	MST1R	NEK3	NEK8	NME3
	pos. control	PKM2	RIPK3	TEC	ULK2	UMPK
	STAT6		CNOT2	MLF2	MGC39518	C22ORF16
IBIDI #14	neg. control	NPR2	PIK3R2	PIK4CB	PIP5K1A	STK32C
	pos. control	VRK2	WBSCR1	CRYM	FLNA	TRAP1
	DGCR14	RAE1	PMM1	POLE2	ABCA3	AP2A1
IBIDI #15	neg. control	ASPH	ATP2B2	RNF157	RGS3	GCGR
	pos. control	CXCR4	FLJ11856	DEFD1	MGC17330	FLJ14451
	C14ORF160	C10ORF81		KIAA1727		FLJ12787
IBIDI #16	neg. control	TASR1	GNAT2	CXCR1	P2RY6	GPR19
	pos. control	FLJ22595	PTGES2	FLJ13909	HMGA1L4	KIAA1720
	NOD27	ZDHHC18	TLL2	TM4SF7		ZNF32
IBIDI #17	neg. control	ZNF41	SPAG4		TLP19	TGFBR2
	pos. control	MAP3K10	AATK	ITGB1BP1		
IBIDI #18	neg. control	ADCY4	ADCY7	ARG2	C20ORF30	C6ORF32
	pos. control		KIAA0690	KIAA1007	LIM	LMO6
		SIGLEC7		SLC25A14	STX6	TNKS1BP1

IBIDI #19	neg. control			GNAZ	HLA-DRB4	HNRPA2B1
	pos. control	MRPL22	OGDHL	PDCD7	PIP	RCP9
	TRDN	TTLL4	WDR37	ZNF289	ZNF38	ZNF79
IBIDI #20	neg. control		ROCK2			NME6
	pos. control	PIK3R4	SCAP2	SLA	ARPP-19	CHRNA3
	NR4A2	TNFRSF14	ANK2		SRP54	EIF4A1
IBIDI #21	neg. control				C10ORF38	
	pos. control				SYK	FOSL2
					MAP3K8	

All hits were silenced in MeJuSo stably expressing HLA-DRB1-GFP (green), a golgi marker (red) and stained for early endosomes (blue). Six images were taken per condition. Each slide includes one well of control siRNA treated cells (neg. control) and one well with siRILP (pos. control). By clicking on the slide number you can navigate to the corresponding images. High resolution images are available on request.

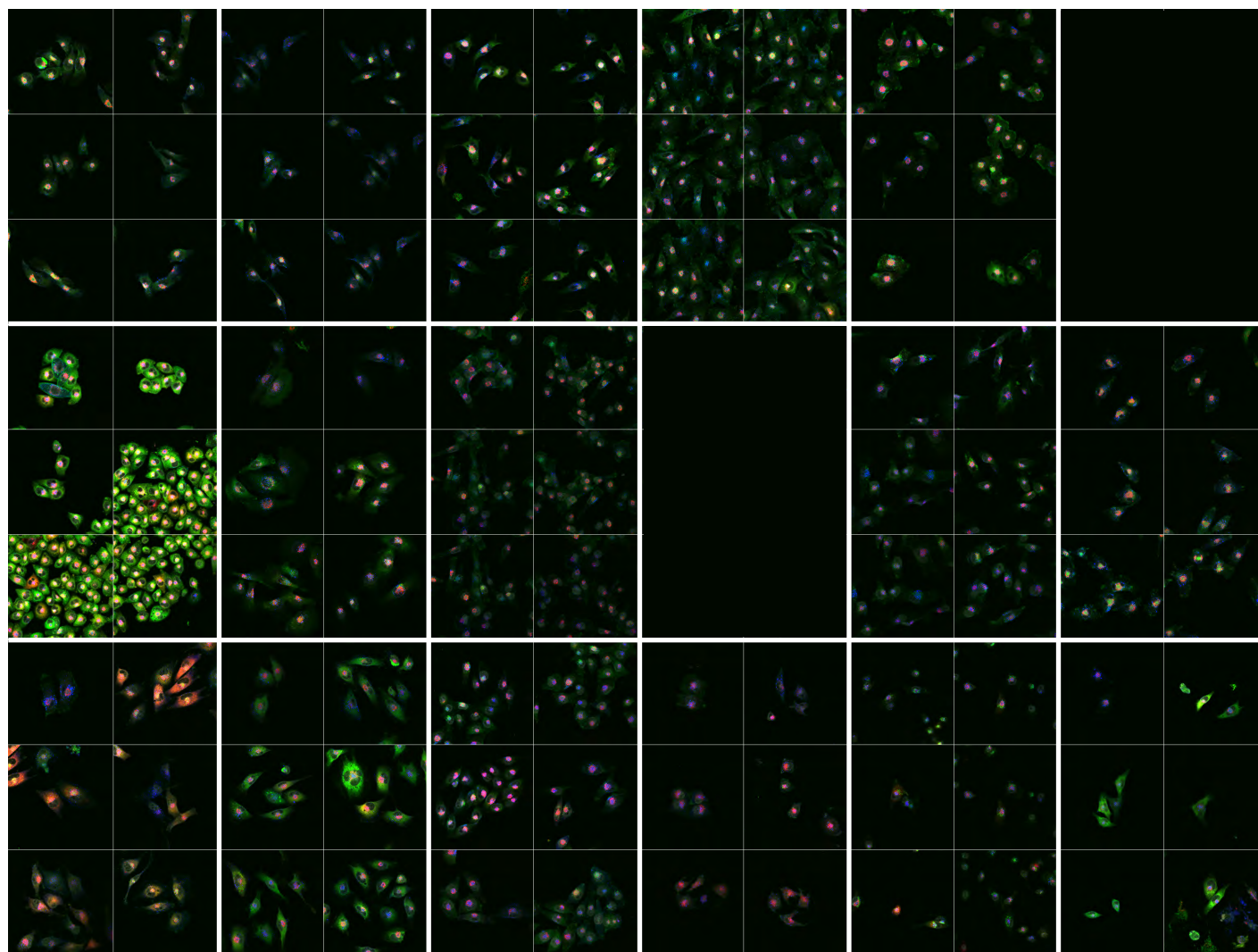
[Return to Contents](#)



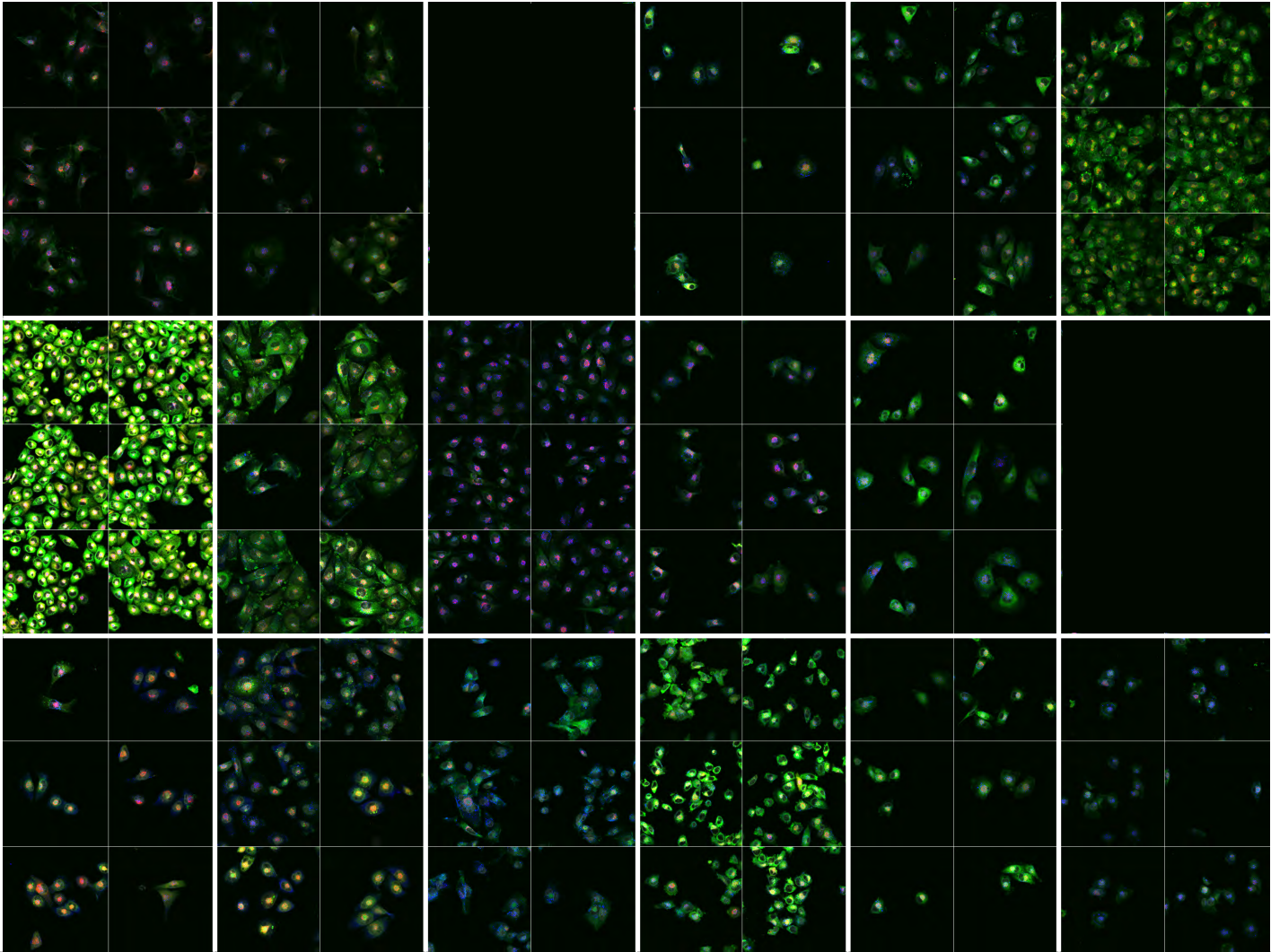
[Return to Overview](#)

IBIDI #01	neg. control	MDS032	PEX26	GPP34R	RFWD3	RPP25
	pos. control	EZI	FLJ32844		PDCD1LG1	RRAGB
	TBC1D17	FLJ13639	FLJ14146	ZNF552	UNKL	CREB3L2

[Return to Overview](#)



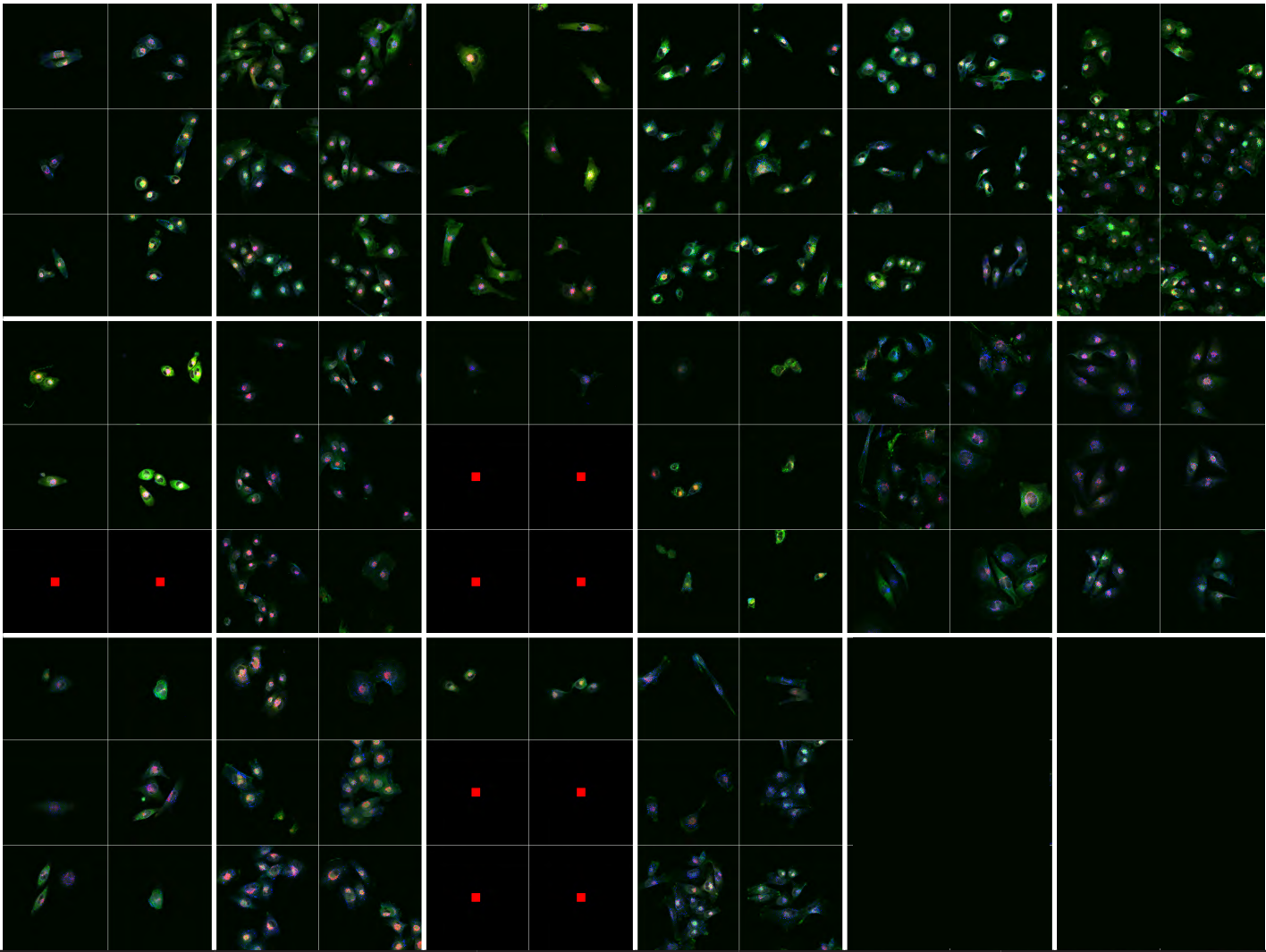
IBIDI #02	neg. control	FLJ10241	SARS2	FLJ20249	SCAND2	
	pos. control	MGC33584	C9ORF59		ZBED2	FLJ23476
	FLJ22318	DDX31	BCL11B	LOC63920	GOLPH3	PP3111



[Return to Overview](#)

IBIDI #03

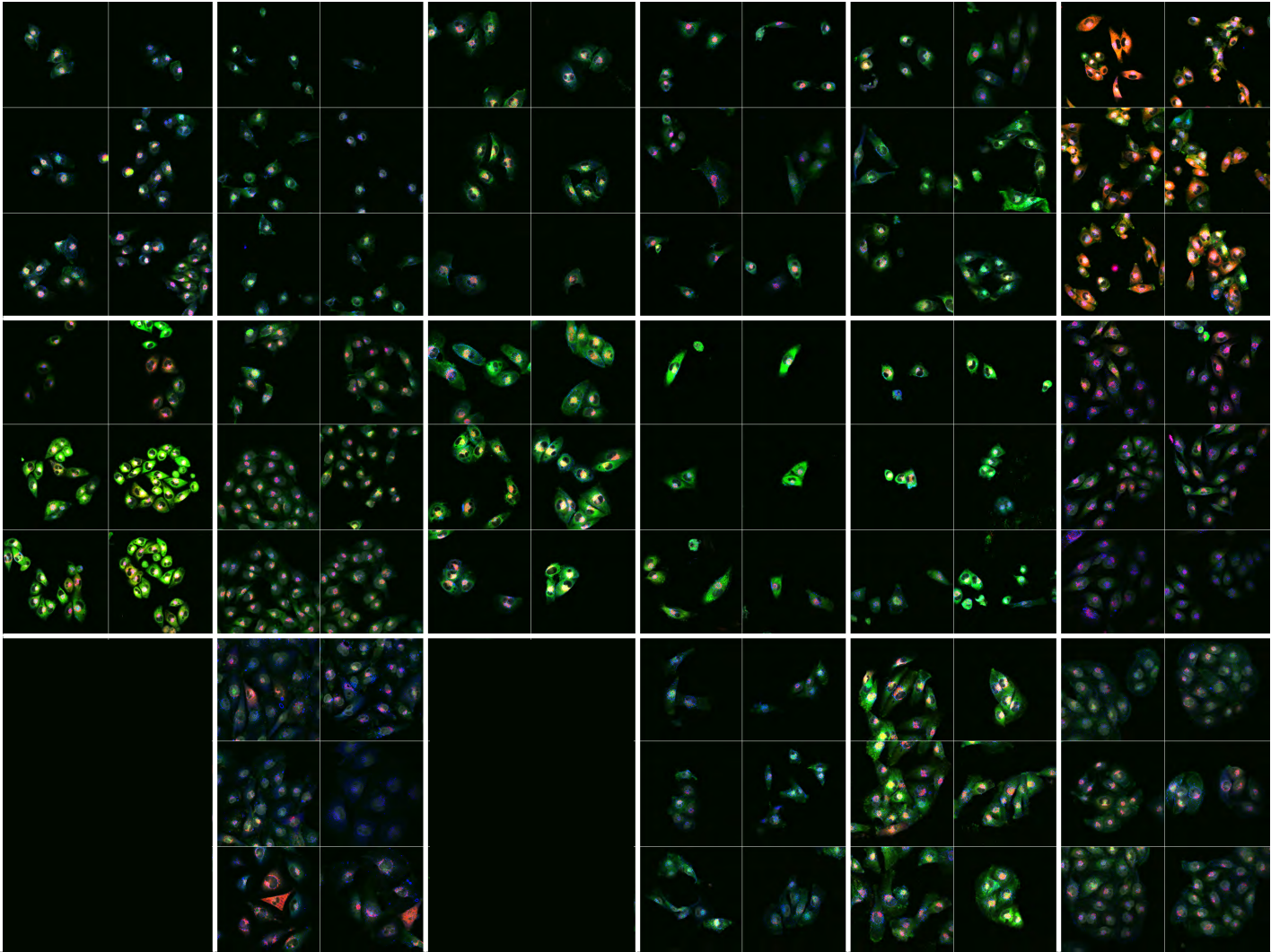
neg. control	ZNF462		ZNF304	FEM1C	MGC16824
pos. control	SLC4A2	SLC6A9	SEC13L1	SFRS1	
BACE1	ZNF324	NONO	MT1X	KIR2DS4	KRTHA1



[Return to Overview](#)

IBIDI #04

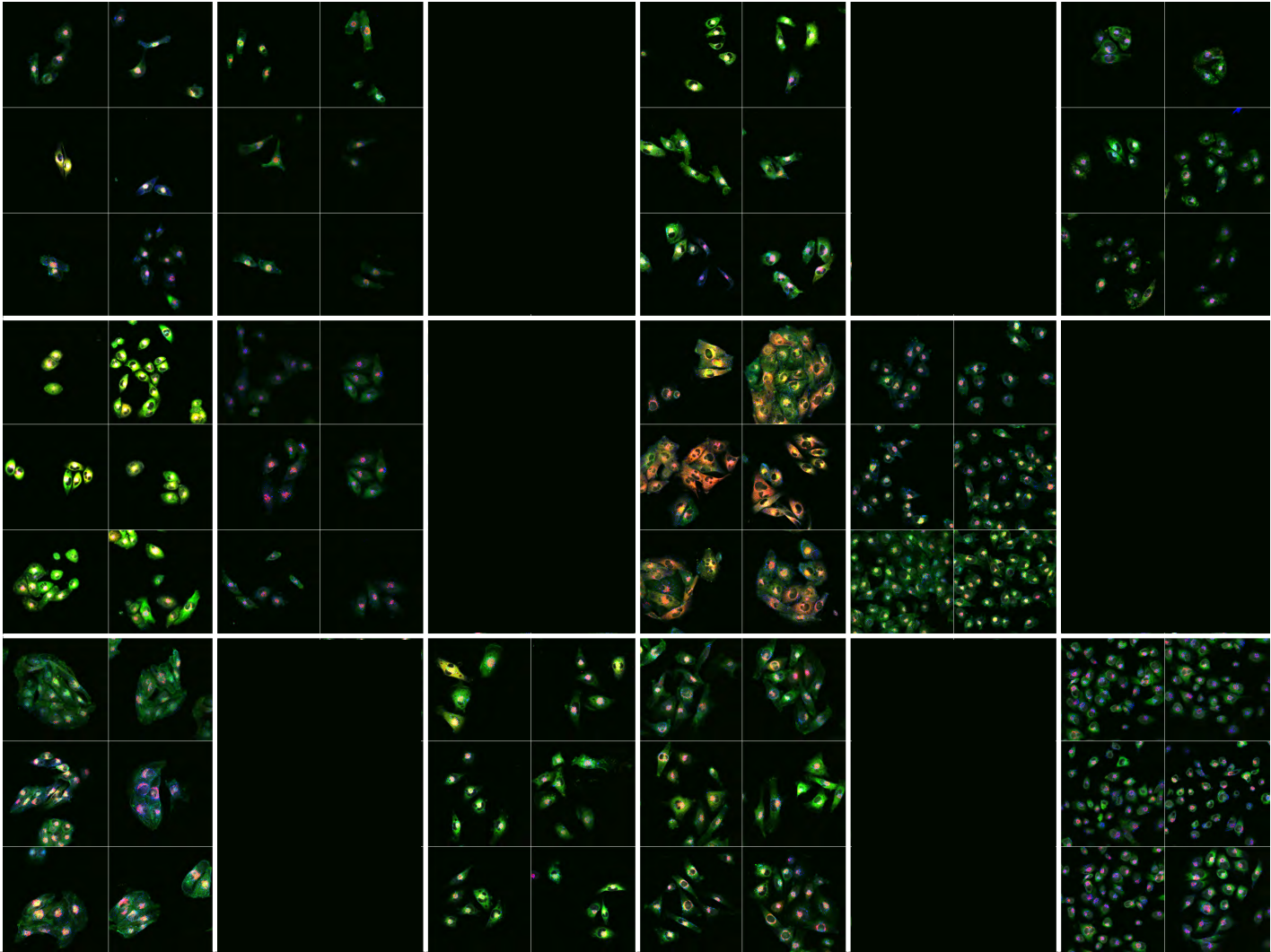
neg. control	KAT3	C1ORF6	FLJ11280	FBXO28	RBAF600
pos. control	EIF2S1	EIF2S3	GARP	GNA12	CDC42EP4
PSMB2	ACRBP	ACTRT1	COX7C		



[Return to Overview](#)

IBIDI #05

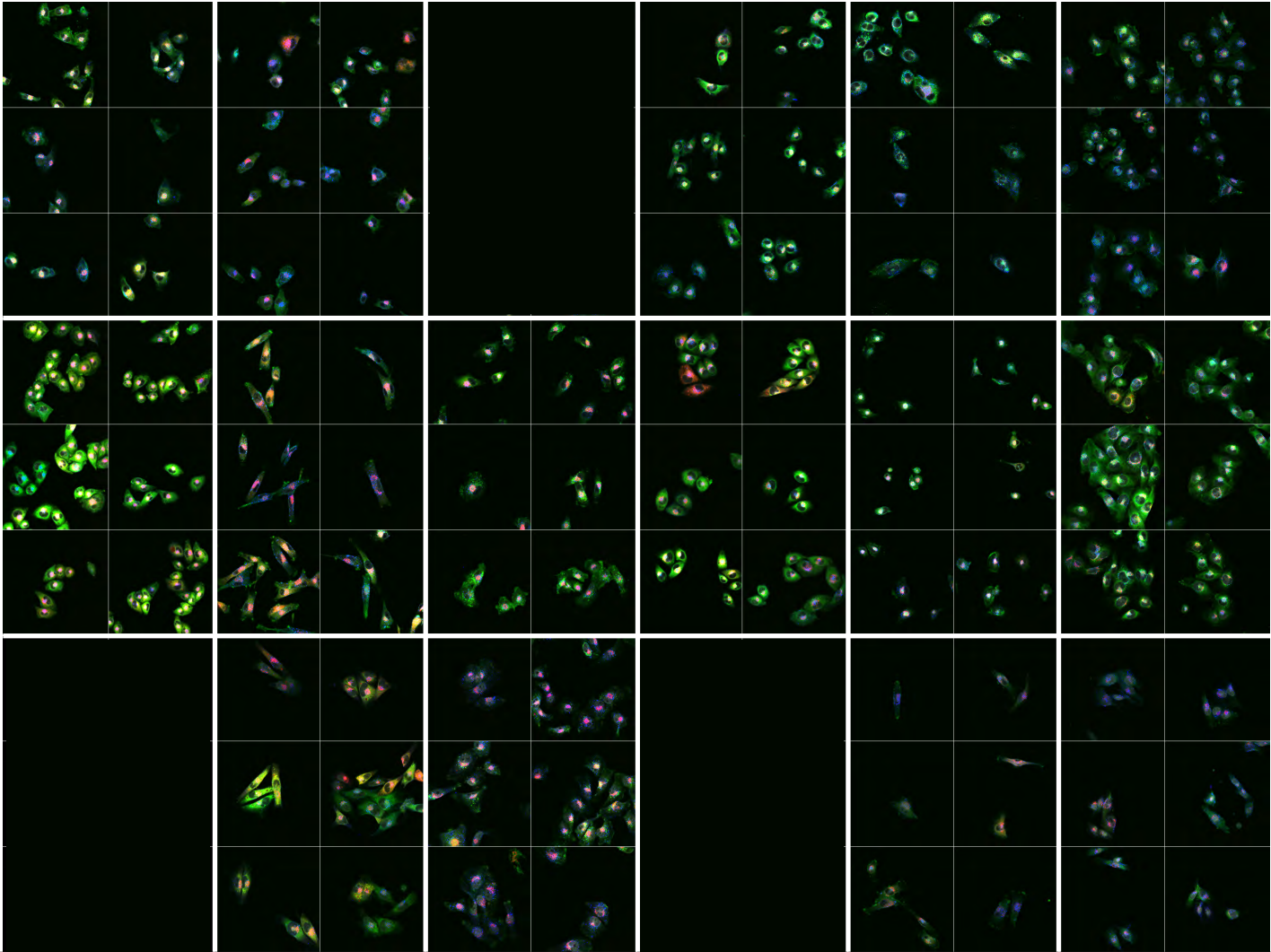
neg. control	TNRC15	DKFZP547E10	NOL6	LOC65243	MGC3036
pos. control	PPIG	HTATIP	FKBP3	CHD4	HLA-DRA
	ACK1		NR1H2	PAX8	THRB



[Return to Overview](#)

IBIDI #06

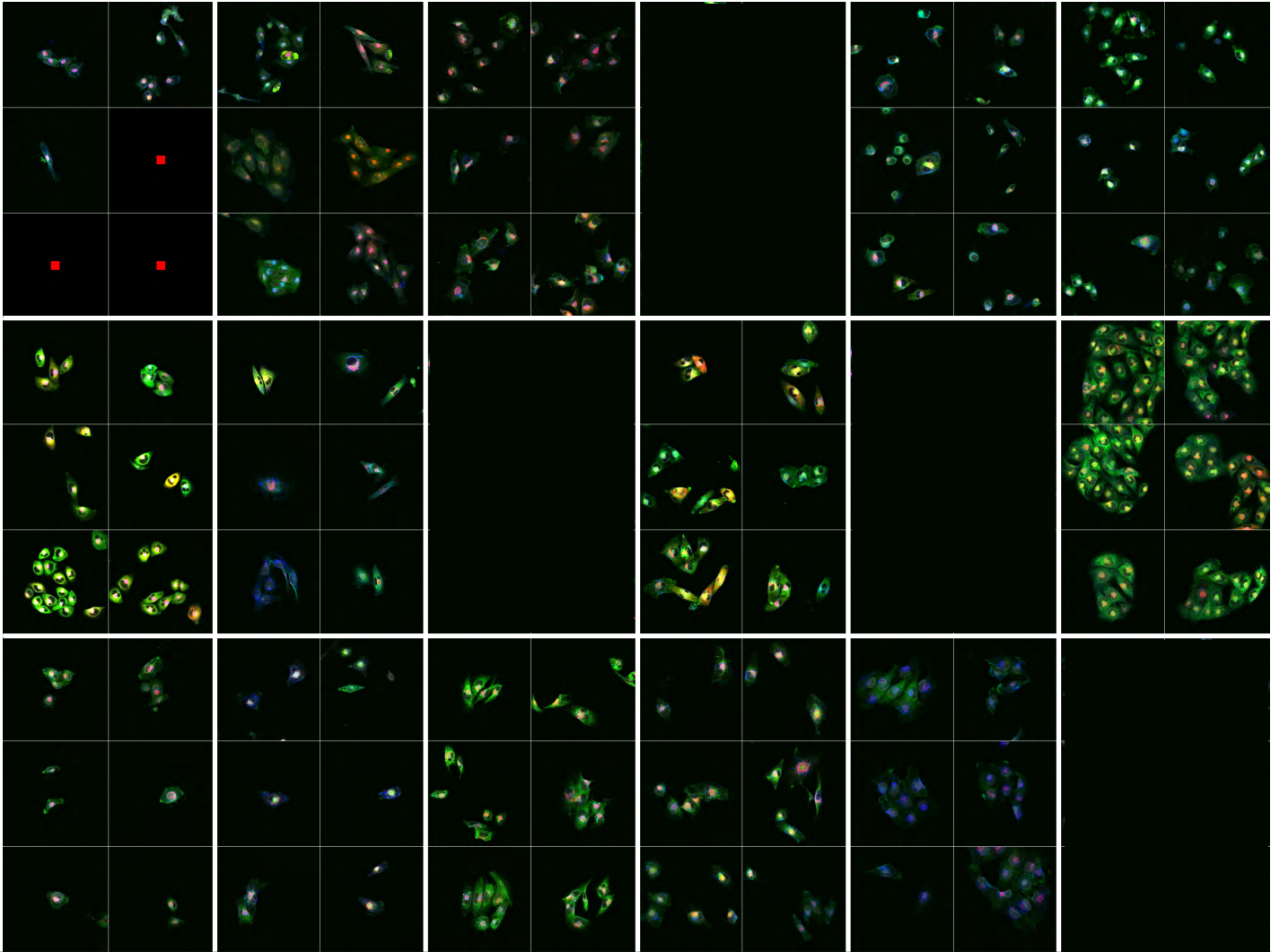
neg. control	OTUB2		EFHD2		PRKD2
pos. control	IL27RA		CCL3L1	IL10RA	
LOC124842		CRYAB	DAP3		MHC2TA



[Return to Overview](#)

IBIDI #07

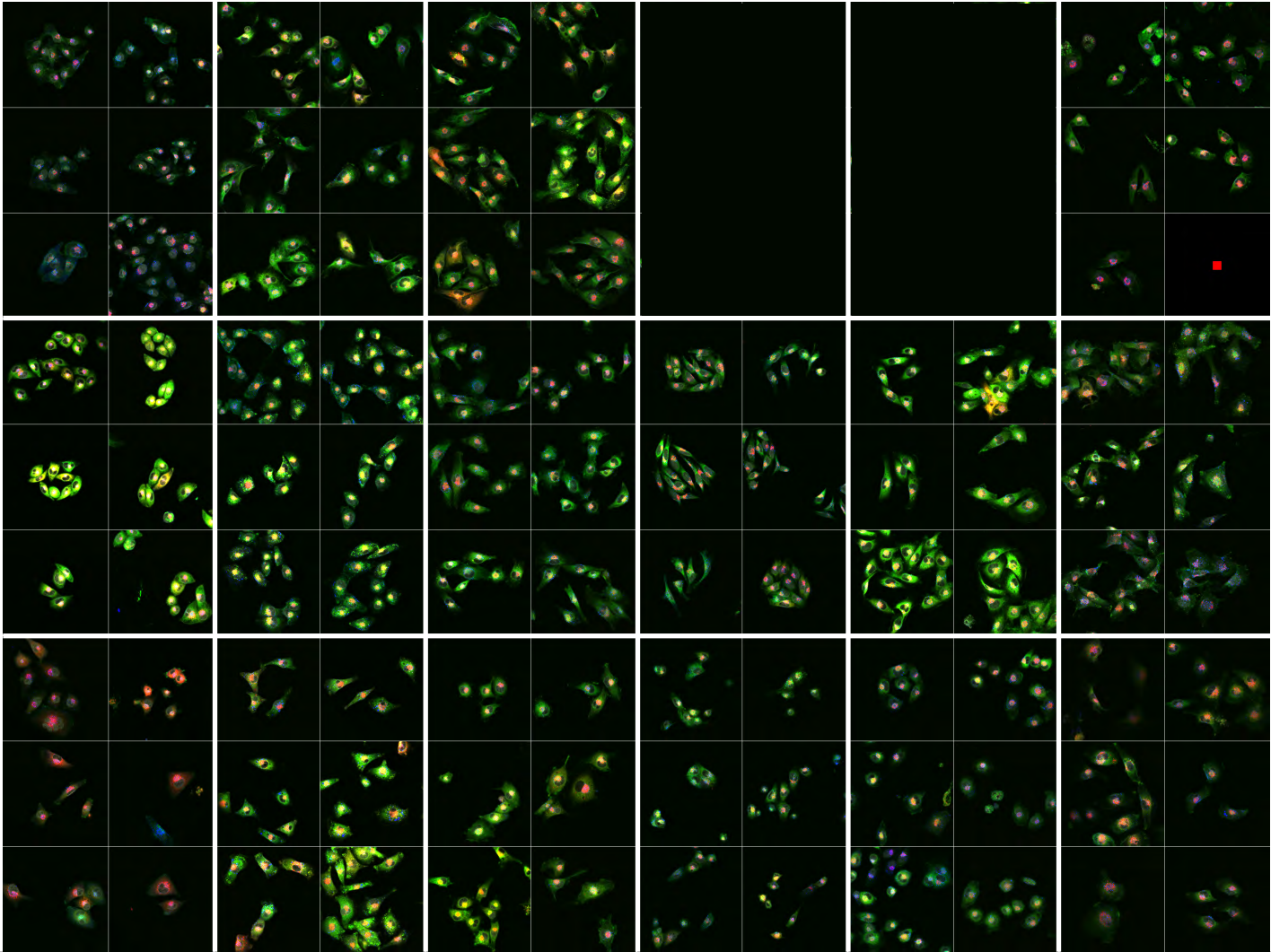
neg. control	FLJ35784		FLJ45983	LOC389643	ACTBL1
pos. control	REC14	CDCA3	RILP	CCM2	RNF26
	U5-116KD	STOML1		KIAA0140	NUP93



[Return to Overview](#)

IBIDI #08

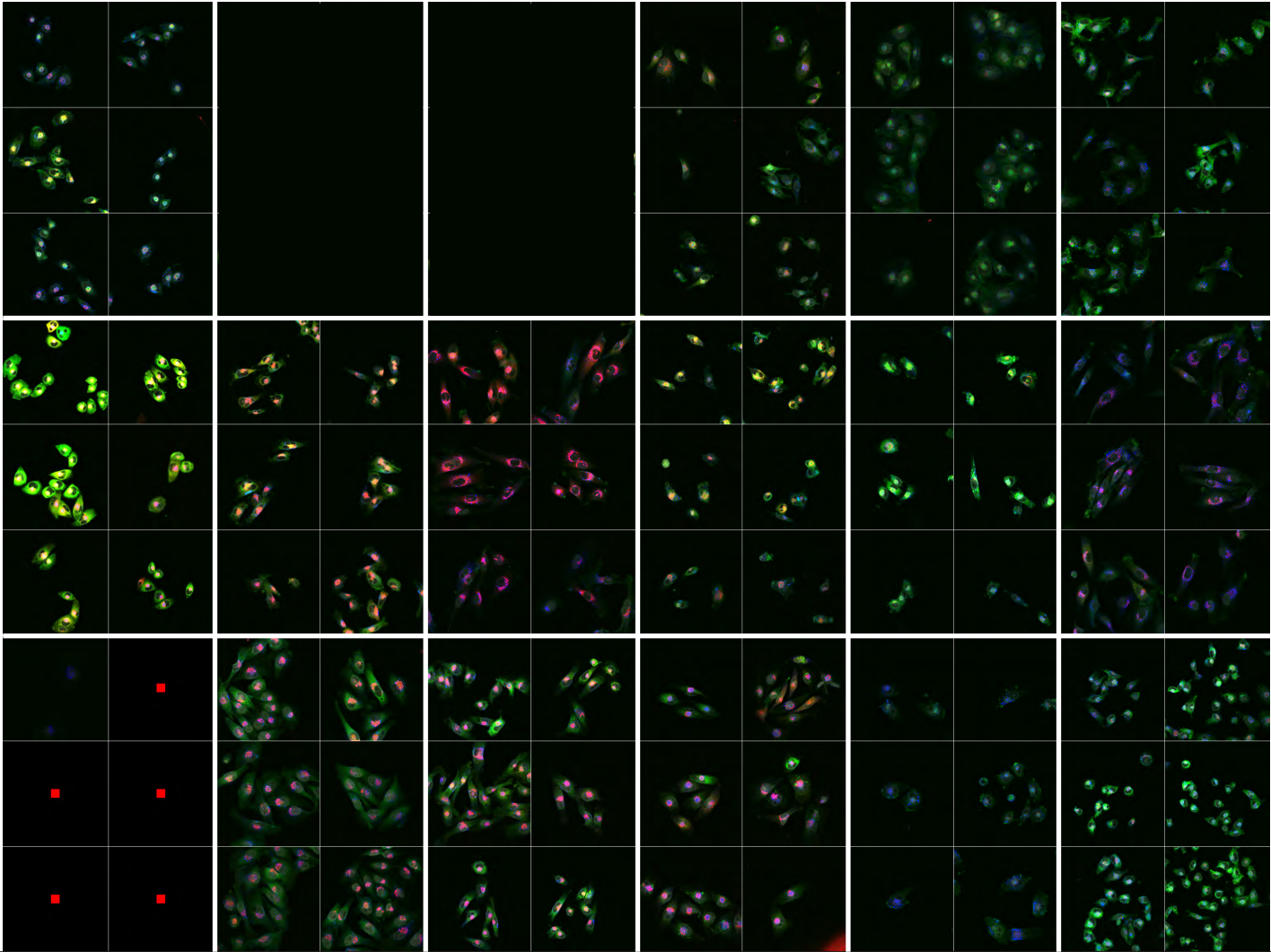
neg. control	NOMO3	KCNJ4		LOC388720	FLJ45910
pos. control	SMCR7		MGC16279		DGCR6L
IL23A	CGI-48	VPS28	C15ORF15	TIMM44	



[Return to Overview](#)

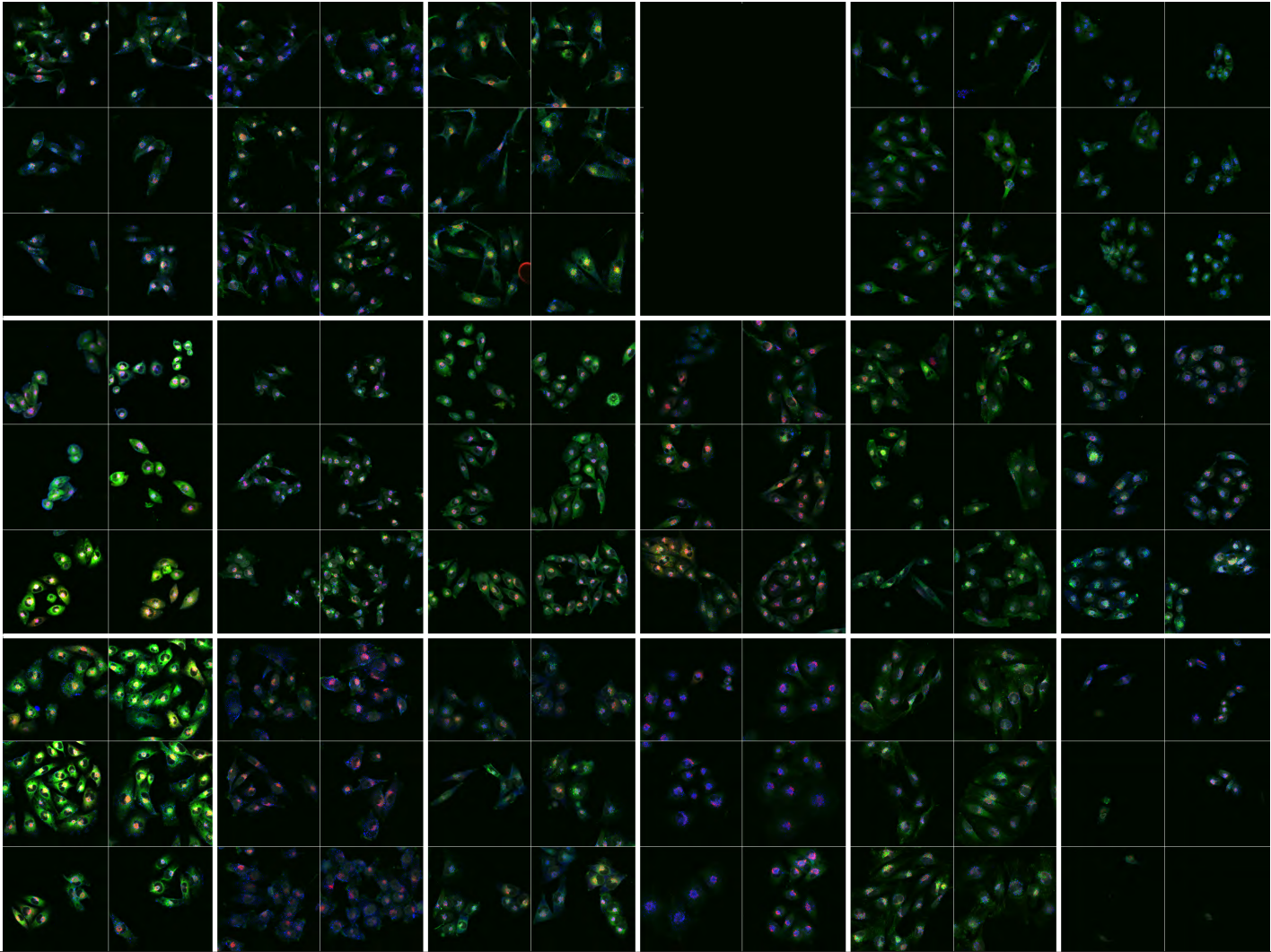
IBIDI #09

neg. control	QP-C	CPAMD8			USP54
pos. control	KIAA0258	POM121	C19ORF32	TTC18	C21ORF96
DDAH1	ZNF426	ZNF69	SMP3	NACA	SNAPC4



[Return to Overview](#)

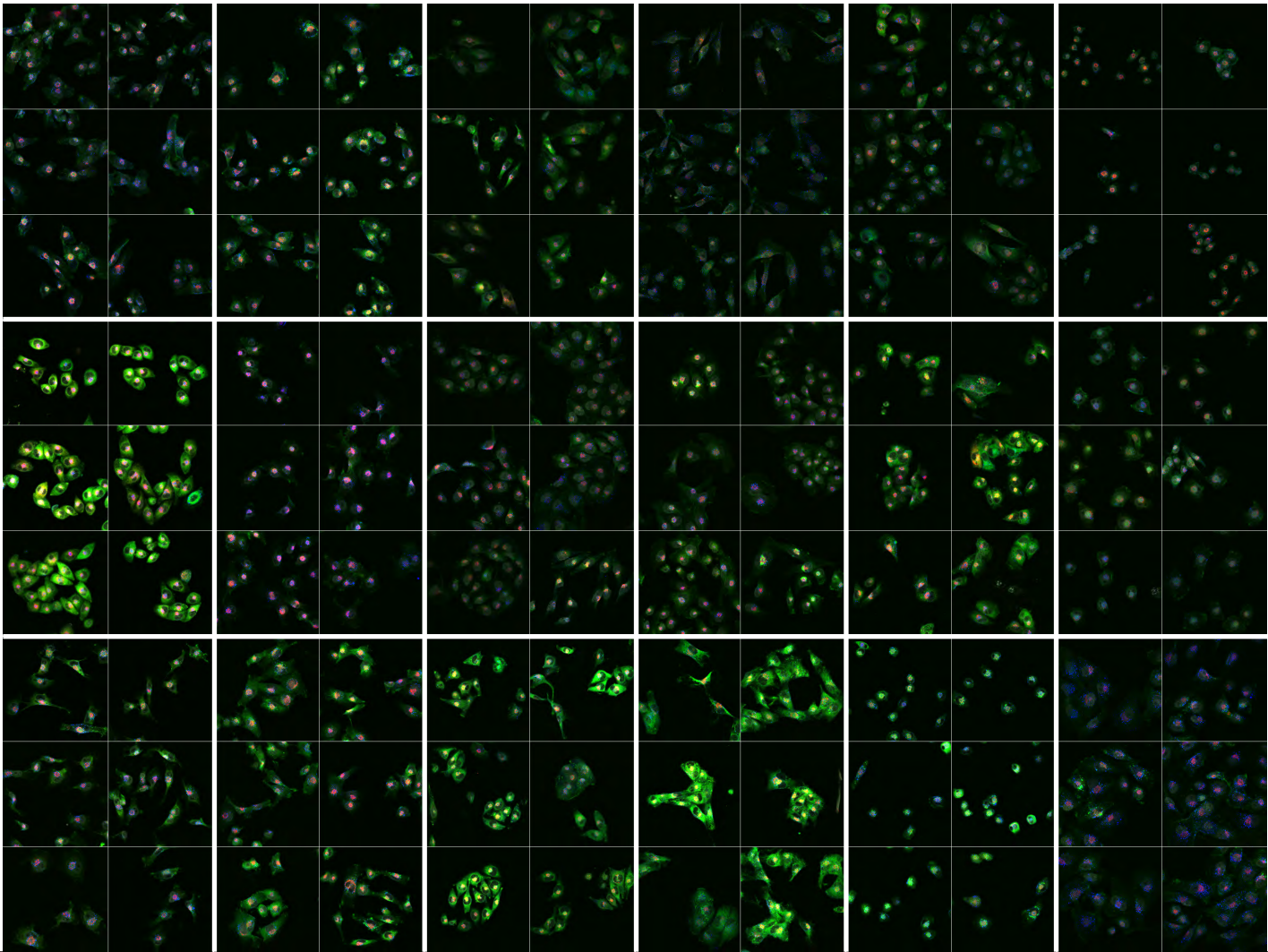
IBIDI #10	neg. control			RFT1	FUT10	SOC
	pos. control	FLJ11848	CORT	TOLLIP	TOLLIP	CORT
	DPYSL2	CAD	MAFA	WARP	FLJ10618	SLA2



[Return to Overview](#)

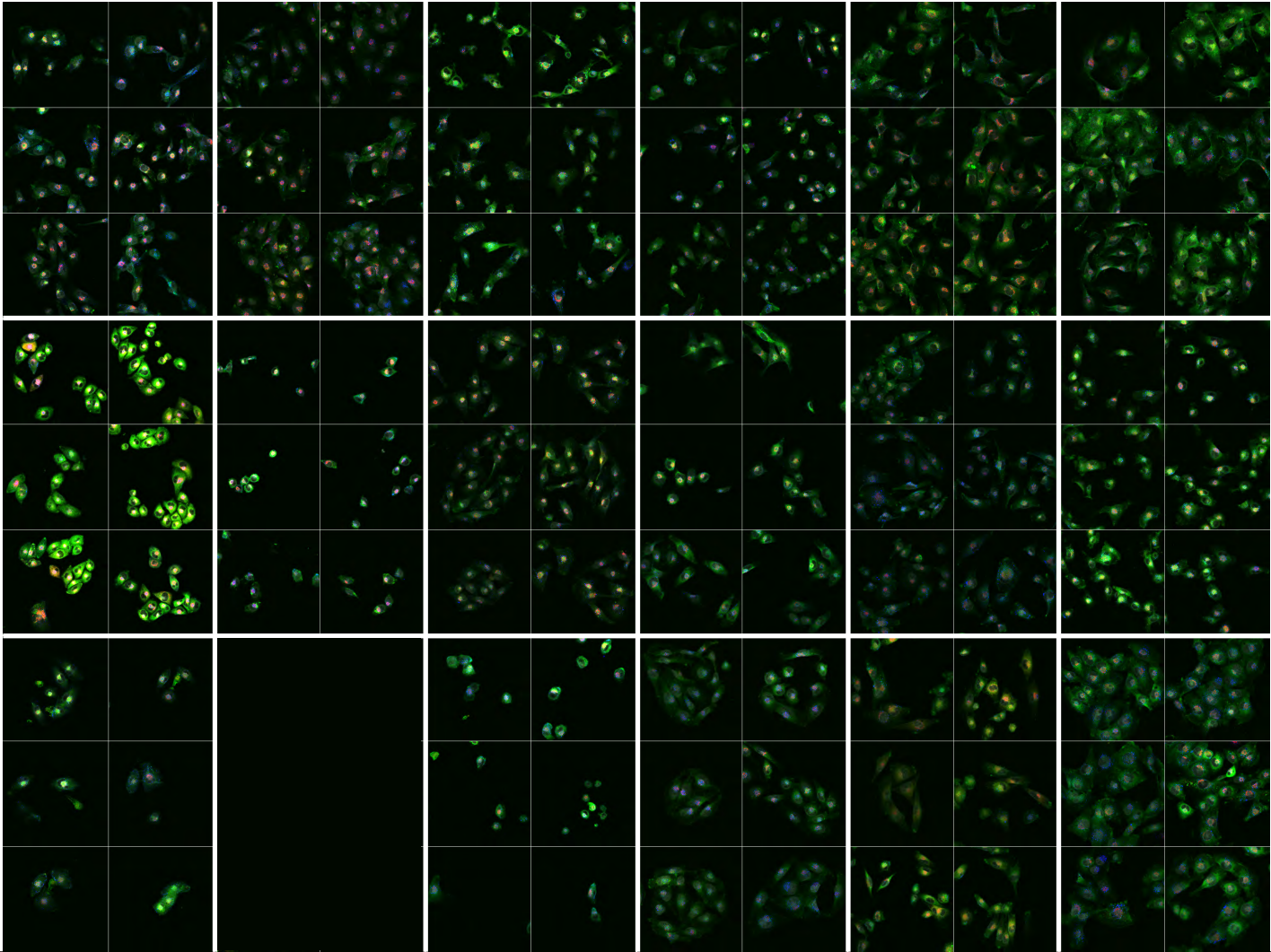
IBIDI #11

neg. control	MDA5	PLEKHA4		C13ORF9	GPR91
pos. control	DYRK1A	TRIP13	NPR2	CHEK1	ARAF1
CSK	DAPK1	DGKQ	IKBKE	TNIIK	MAP2K3



[Return to Overview](#)

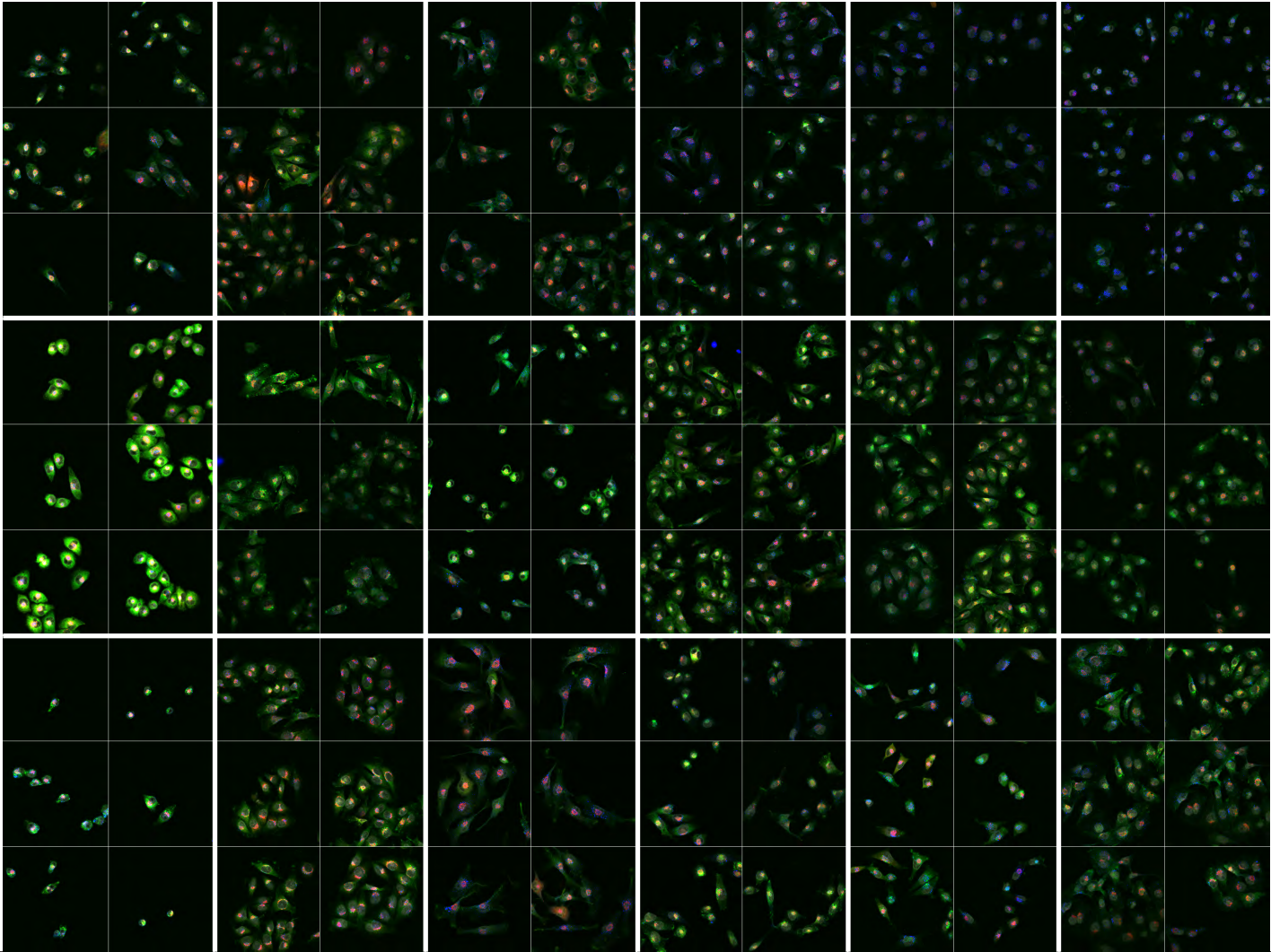
IBIDI #12	neg. control	HLA-DMB	THTPA	LOC403313	CHKA	DAPK3
	pos. control	ASP	CAMK1	CDC2L5	PLK3	CSF1R
	MAP3K11	MAP3K12	MAP3K14	MAP3K9	MAP4K1	MAPK1



[Return to Overview](#)

IBIDI #13

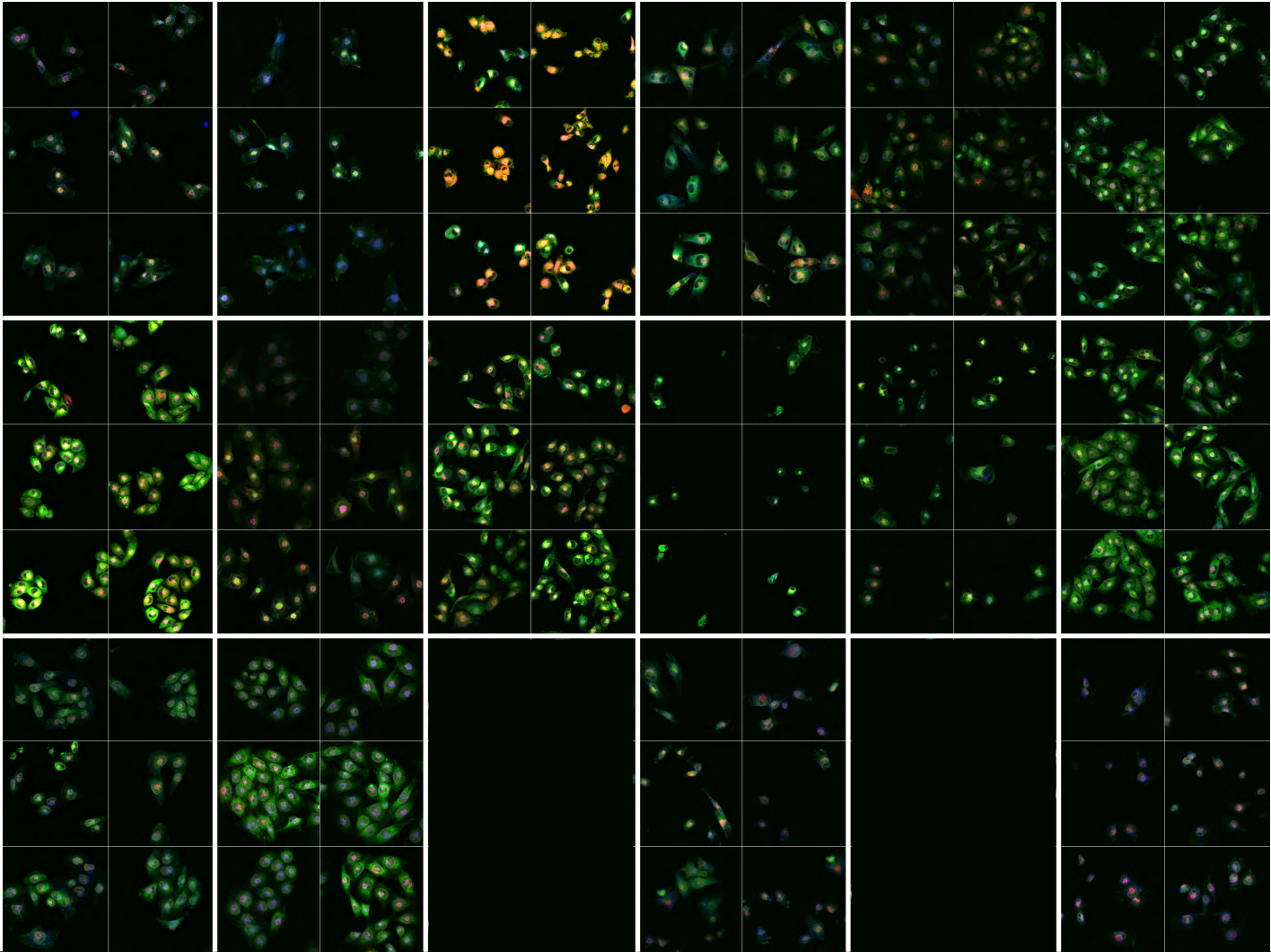
neg. control	MINK	MST1R	NEK3	NEK8	NME3
pos. control	PKM2	RIPK3	TEC	ULK2	UMPK
STAT6		CNOT2	MLF2	MGC39518	C22ORF16



[Return to Overview](#)

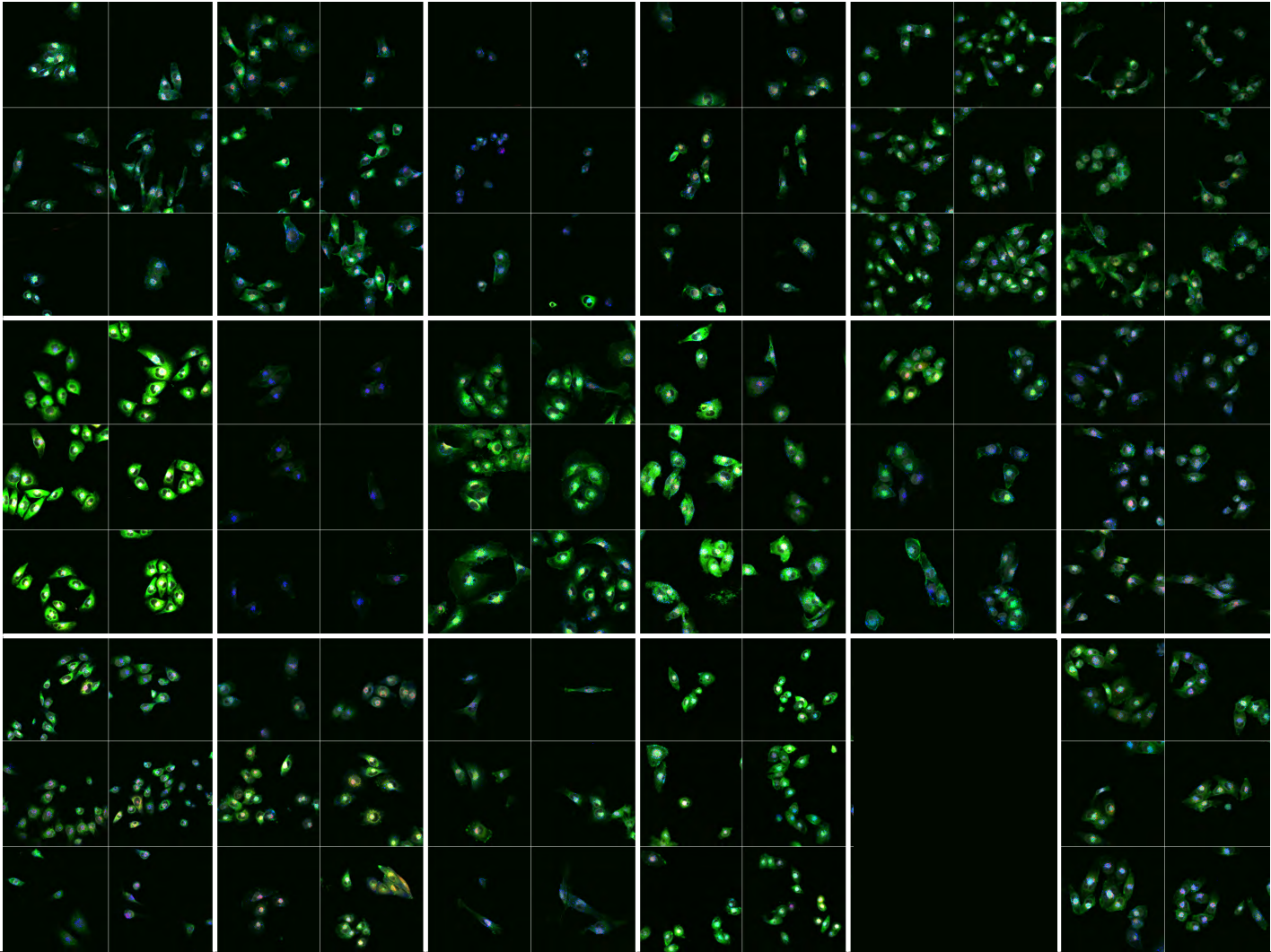
IBIDI #14

neg. control	NPR2	PIK3R2	PIK4CB	PIP5K1A	STK32C
pos. control	VRK2	WBSCR1	CRYM	FLNA	TRAP1
DGCR14	RAE1	PMM1	POLE2	ABCA3	AP2A1



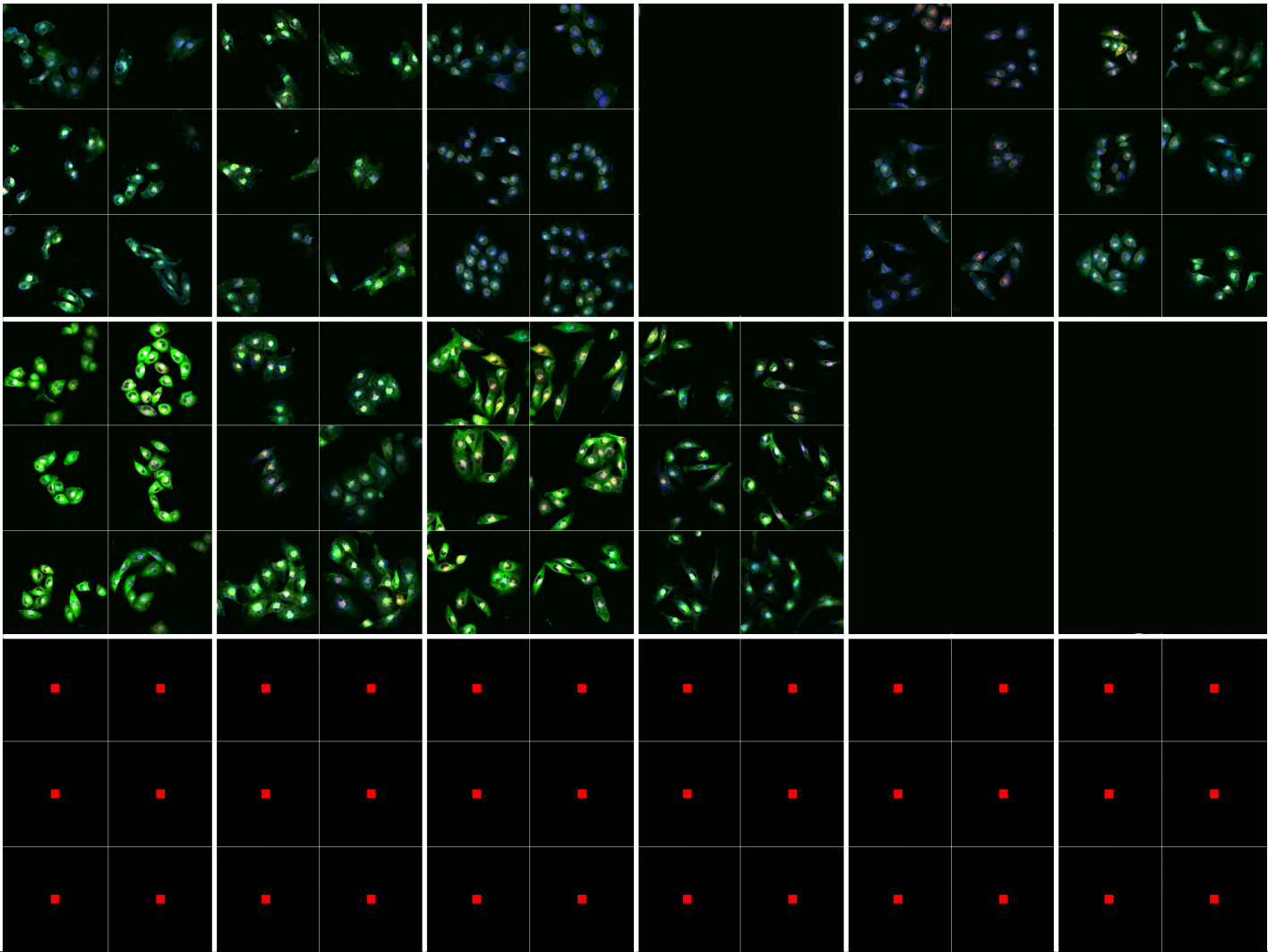
[Return to Overview](#)

IBIDI #15	neg. control	ASPH	ATP2B2	RNF157	RGS3	GCGR
	pos. control	CXCR4	FLJ11856	DEFD1	MGC17330	FLJ14451
	C14ORF160	C10ORF81		KIAA1727		FLJ12787



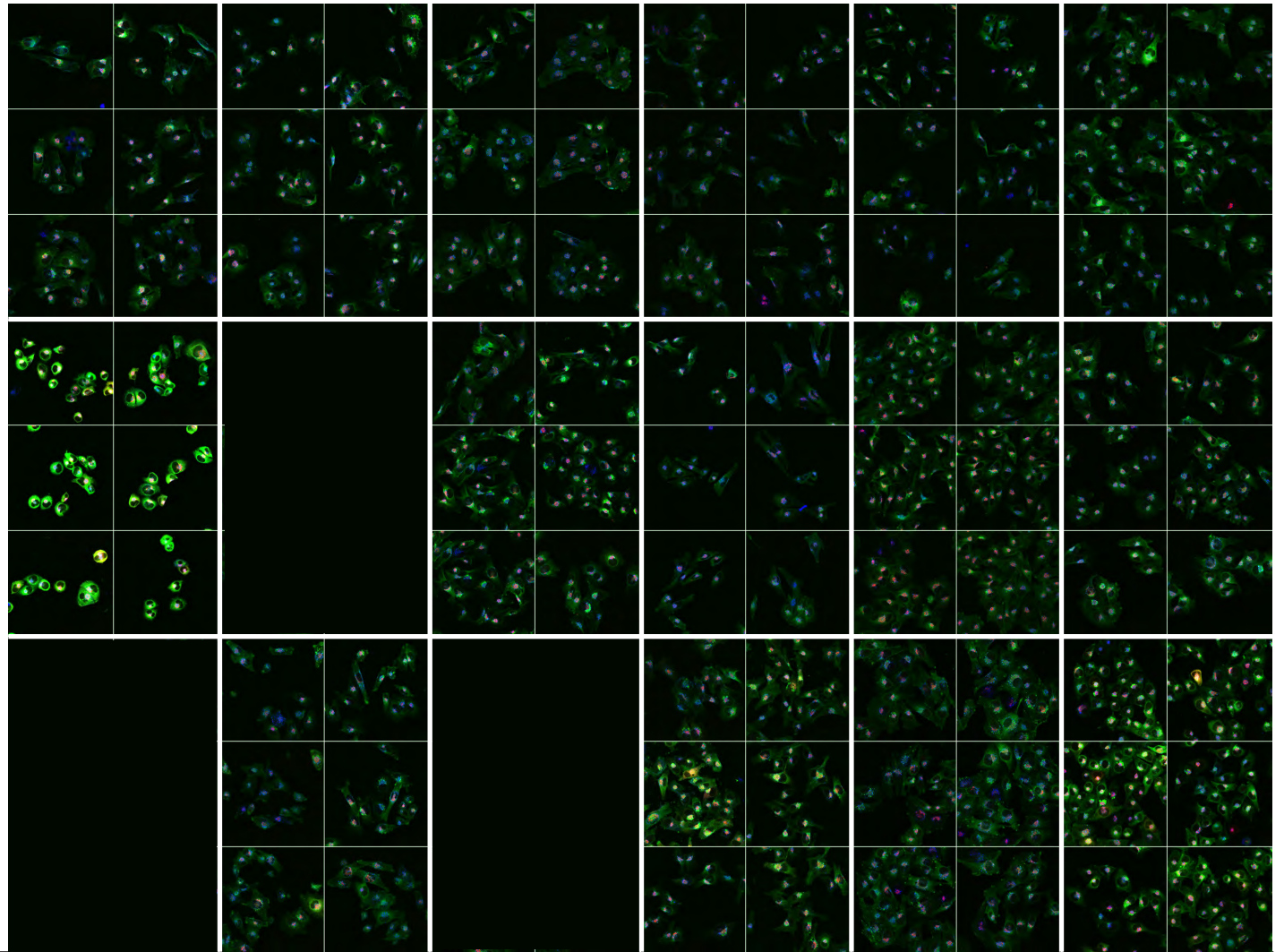
[Return to Overview](#)

IBIDI #16	neg. control	TASR1	GNAT2	CXCR1	P2RY6	GPR19
	pos. control	FLJ22595	PTGES2	FLJ13909	HMGA1L4	KIAA1720
	NOD27	ZDHHC18	TLL2	TM4SF7		ZNF32



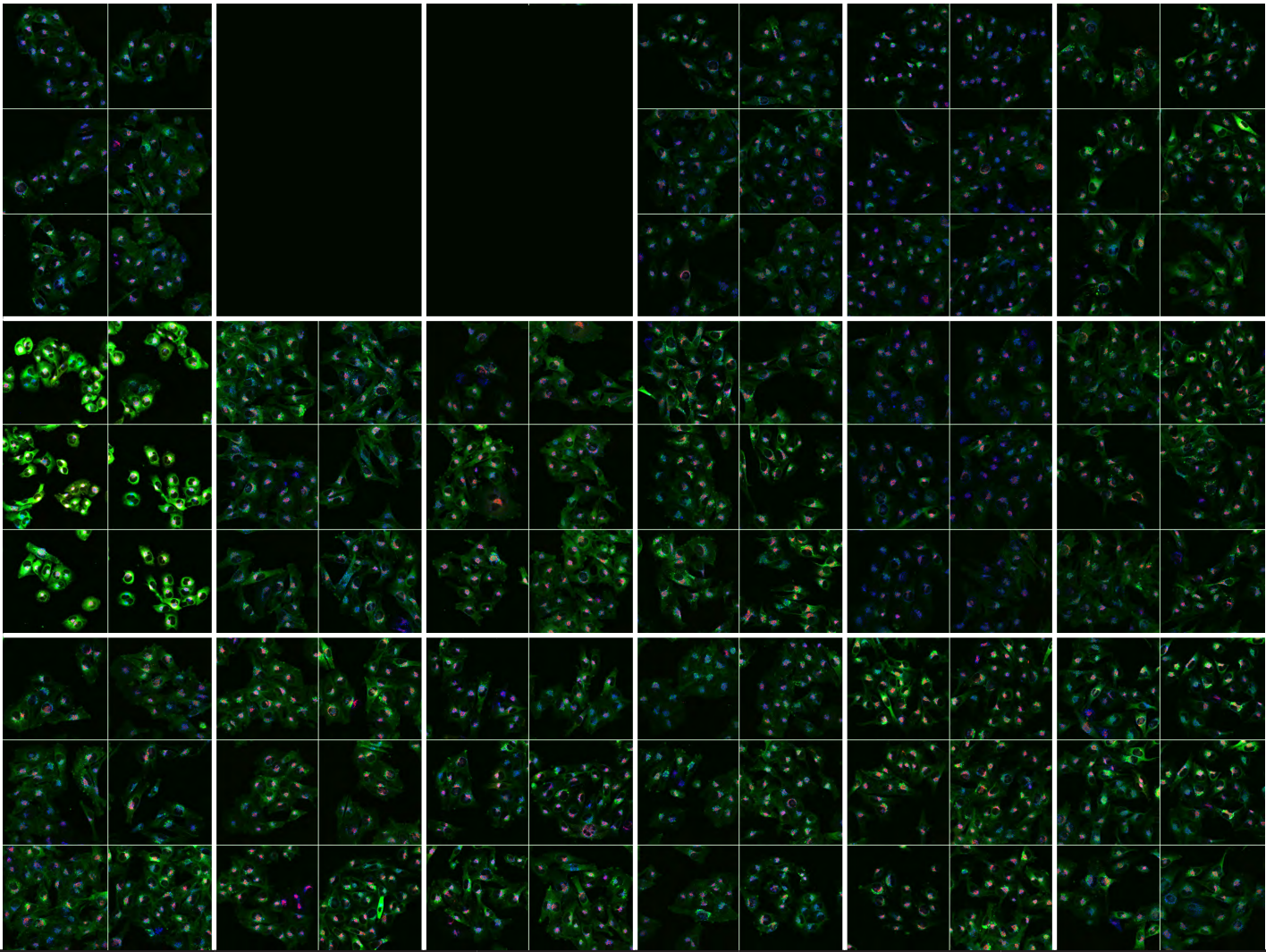
[Return to Overview](#)

IBIDI #17	neg. control	ZNF41	SPAG4		TLP19	TGFB2
	pos. control	MAP3K10	AATK	ITGB1BP1		



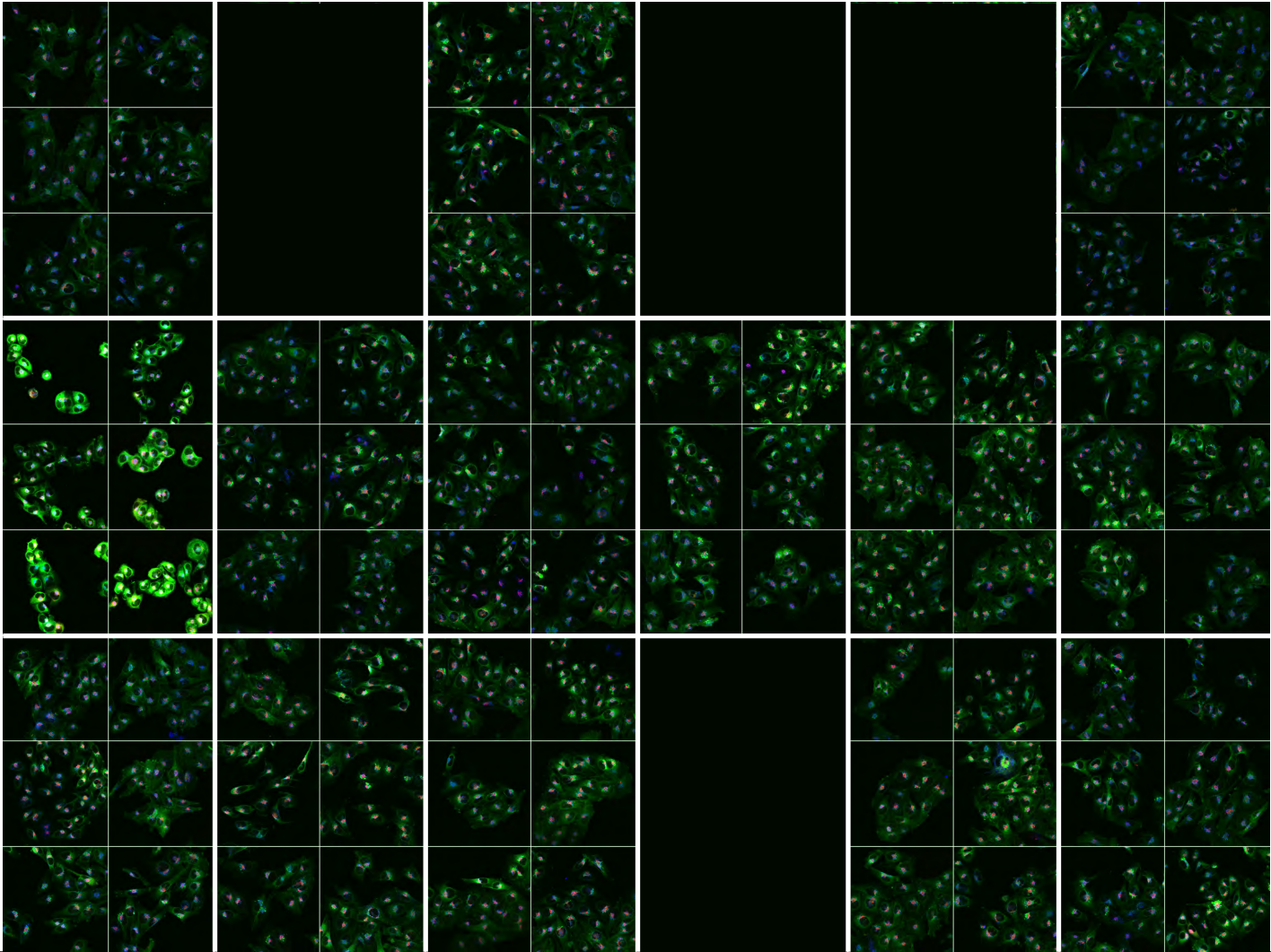
[Return to Overview](#)

IBIDI #18	neg. control	ADCY4	ADCY7	ARG2	C20ORF30	C6ORF32
	pos. control		KIAA0690	KIAA1007	LIM	LMO6
		SIGLEC7		SLC25A14	STX6	TNKS1BP1



[Return to Overview](#)

IBIDI #19	neg. control			GNAZ	HLA-DRB4	HNRPA2B1
	pos. control	MRPL22	OGDHL	PDCD7	PIP	RCP9
	TRDN	TTLL4	WDR37	ZNF289	ZNF38	ZNF79

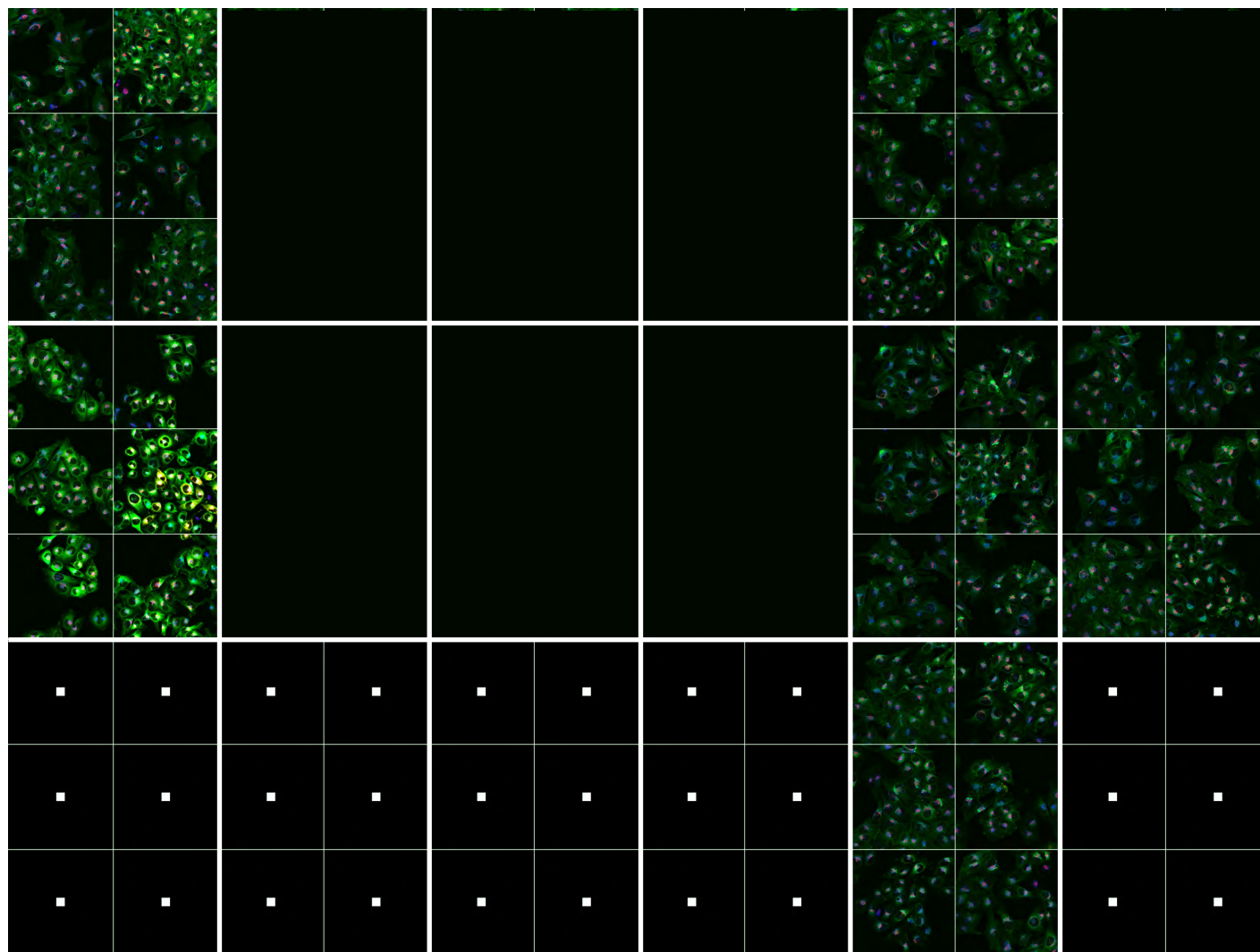


[Return to Overview](#)

IBIDI #20

neg. control		ROCK2			NME6
pos. control	PIK3R4	SCAP2	SLA	ARPP-19	CHRN3
NR4A2	TNFRSF14	ANK2		SRP54	EIF4A1

[Return to Overview](#)



IBIDI #21	neg. control				C10ORF38	
	pos. control				SYK	FOSL2
					MAP3K8	